

Now available from **UNIROPE**®
SLINGMAX™

McKISSICK®

Easy-Lift® Pat. Pend

Overhead Bridge Crane Block

*Designed to provide a **Quality** replacement block with a quick delivery*

- ✓ **All sizes in-stock** - Assembled on-site while you wait
- ✓ **Easy to Reeve** - Removable housing allows block to be reeved without complete disassembly
- ✓ **Bearing Life and Design Factor meet:**
- ASME HST-4, Class H4 - CMAA 70 Class D
- ✓ **Sheave pitch diameter minimum of 16 times rope diameter on standard sizes (see yellow boxes in tables below)**
- ✓ All single point shank hooks are genuine Crosby®, forged alloy steel, Quenched and Tempered, contain the patented QUIC-CHEK® markings and come with “world class” latch that integrates with hook tip.
- ✓ **Sheave bearings are maintenance free** and sealed for life (10,000 hrs)
- ✓ Wide range of product available (see tables below)
- ✓ Ability to attach optional “anti two-block” device
- ✓ Available with shackle as lower connection point



Series 751 - Single Sheave					
WLL (t)	2	3	5	7.5	10
Sheave O.D. (in.)	6.5	8	10	12	14
Pitch Diameter (in)	5.69	7.38	9.25	11.00	12.50
Wire Line*					
1/4" 6.5mm					
5/16" 8mm					
3/8" 9-10mm					
7/16" 11mm					
1/2" 12-13mm					
9/16" 14mm					
5/8" 16mm					
3/4" 19mm					
7/8" 22mm					
1" 25-26mm					

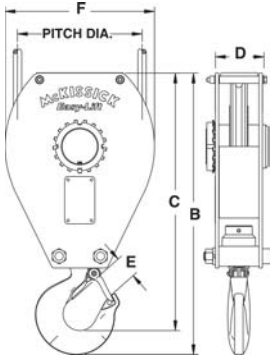
Series 752 - Double Sheave					
WLL (t)	3	5	7.5	10	15
Sheave O.D. (in.)	6.5	8	10	12	12
Sheave Spacing Centerline (in)	3.25-5.0	4.5-6.5	5.25-8.0	6.5-10	7.5-11
Pitch Diameter (in)	5.69	7.38	9.25	11.00	11.00
Wire Line*					
1/4" 6.5mm					
5/16" 8mm					
3/8" 9-10mm					
7/16" 11mm					
1/2" 12-13mm					
9/16" 14mm					
5/8" 16mm					
3/4" 19mm					

www.unirop.com

UNIROPE®
SLINGMAX™

McKISSICK® Easy-Lift® Overhead Bridge Crane Block

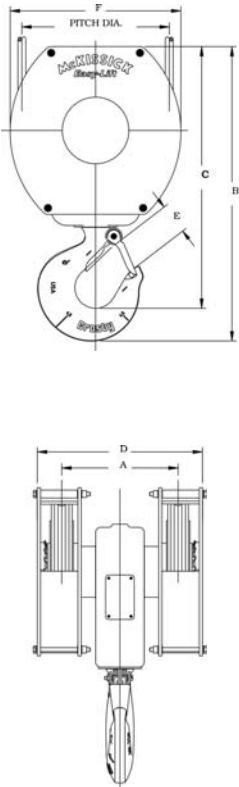
751 Series (Single Sheave)



Working* Load Limit (t)	Sheave Diameter (in.)	Weight (lbs.)	Dimensions (in.)						
			Overall Length B	Net Length C	Thickness D	Throat Opening with S-4320 Latch E	Width F	Wire Line Sizes**†† (in.)	Pitch Diameter
2	6.5	18	13.93	12.80	2.12	1.16	7.25	1/4, 5/16, 3/8	5.69
3	8	35	16.88	15.41	2.75	1.41	8.94	5/16, 3/8, 7/16	7.38
5	10	60	21.00	19.19	3.50	1.69	11.12	7/16, 1/2, 9/16	9.25
7.5	12	115	25.44	23.19	4.25	2.22	16.46	9/16, 5/8, 3/4	11.00
10	14	155	29.12	26.50	5.00	2.41	115.50	5/8, 3/4, 7/8	12.50

* Ultimate Load is 5 times the Working Load Limit
 ** Bold indicates primary wire line size.
 † Additional wire line sizes available - see chart on reverse.

752 Series (Double Sheave)



Working* Load Limit (t)	Sheave Diameter (in.)	Weight (lbs.)	Center Pin Code	Dimensions (in.)							
				Sheave Spacing Centerline to Centerline A	Overall Length B	Effective Length C	Thickness D	Throat Opening with S-4320 Latch E	Width F	Wire Line Sizes **††	Pitch Diameter
3	6.5	35	M	3.25	13.41	11.97	5.75	1.41	7.44	1/4, 5/16, 3/8	5.69
3	6.5	35	M	3.50	13.41	11.97	5.75	1.41	7.44	1/4, 5/16, 3/8	5.69
3	6.5	35	M	3.75	13.41	11.97	5.75	1.41	7.44	1/4, 5/16, 3/8	5.69
3	6.5	35	M	4.00	13.41	11.97	5.75	1.41	7.44	1/4, 5/16, 3/8	5.69
3	6.5	35	N	4.25	13.41	11.97	6.75	1.41	7.44	1/4, 5/16, 3/8	5.69
3	6.5	35	N	4.50	13.41	11.97	6.75	1.41	7.44	1/4, 5/16, 3/8	5.69
3	6.5	35	N	4.75	13.41	11.97	6.75	1.41	7.44	1/4, 5/16, 3/8	5.69
3	6.5	35	N	5.00	13.41	11.97	6.75	1.41	7.44	1/4, 5/16, 3/8	5.69
5	8	75	B	4.50	16.41	14.59	7.69	1.69	8.94	5/16, 3/8, 7/16	7.38
5	8	75	B	5.00	16.41	14.59	7.69	1.69	8.94	5/16, 3/8, 7/16	7.38
5	8	75	B	5.50	16.41	14.59	7.69	1.69	8.94	5/16, 3/8, 7/16	7.38
5	8	75	C	5.50	16.41	14.59	8.69	1.69	8.94	5/16, 3/8, 7/16	7.38
5	8	75	C	6.00	16.41	14.59	8.69	1.69	8.94	5/16, 3/8, 7/16	7.38
5	8	75	C	6.50	16.41	14.59	8.69	1.69	8.94	5/16, 3/8, 7/16	7.38
7.5	10	125	D	5.25	20.25	18.00	8.69	2.22	11.12	3/8, 7/16, 1/2	9.25
7.5	10	125	D	5.75	20.25	18.00	8.69	2.22	11.12	3/8, 7/16, 1/2	9.25
7.5	10	125	D	6.25	20.25	18.00	8.69	2.22	11.12	3/8, 7/16, 1/2	9.25
7.5	10	125	E	6.00	20.25	18.00	9.44	2.22	11.12	3/8, 7/16, 1/2	9.25
7.5	10	125	E	6.50	20.25	18.00	9.44	2.22	11.12	3/8, 7/16, 1/2	9.25
7.5	10	125	E	7.00	20.25	18.00	9.44	2.22	11.12	3/8, 7/16, 1/2	9.25
7.5	10	125	F	7.00	20.25	18.00	10.44	2.22	11.12	3/8, 7/16, 1/2	9.25
7.5	10	125	F	7.50	20.25	18.00	10.44	2.22	11.12	3/8, 7/16, 1/2	9.25
7.5	10	125	F	8.00	20.25	18.00	10.44	2.22	11.12	3/8, 7/16, 1/2	9.25
10	12	240	G	6.50	23.22	20.62	10.94	2.41	13.46	1/2, 9/16, 5/8	11.00
10	12	240	G	7.00	23.22	20.62	10.94	2.41	13.46	1/2, 9/16, 5/8	11.00
10	12	240	G	7.50	23.22	20.62	10.94	2.41	13.46	1/2, 9/16, 5/8	11.00
10	12	240	G	8.00	23.22	20.62	10.94	2.41	13.46	1/2, 9/16, 5/8	11.00
10	12	240	I	8.50	23.22	20.62	12.94	2.41	13.46	1/2, 9/16, 5/8	11.00
10	12	240	I	9.00	23.22	20.62	12.94	2.41	13.46	1/2, 9/16, 5/8	11.00
10	12	240	I	9.50	23.22	20.62	12.94	2.41	13.46	1/2, 9/16, 5/8	11.00
10	12	240	I	10.00	23.22	20.62	12.94	2.41	13.46	1/2, 9/16, 5/8	11.00
15	12	270	J	7.50	25.38	22.38	11.94	3.19	13.46	9/16, 5/8, 3/4	11.00
15	12	270	J	8.00	25.38	22.38	11.94	3.19	13.46	9/16, 5/8, 3/4	11.00
15	12	270	J	8.50	25.38	22.38	11.94	3.19	13.46	9/16, 5/8, 3/4	11.00
15	12	270	J	9.00	25.38	22.38	11.94	3.19	13.46	9/16, 5/8, 3/4	11.00
15	12	270	L	9.50	25.38	22.38	13.94	3.19	13.46	9/16, 5/8, 3/4	11.00
15	12	270	L	10.00	25.38	22.38	13.94	3.19	13.46	9/16, 5/8, 3/4	11.00
15	12	270	L	10.50	25.38	22.38	13.94	3.19	13.46	9/16, 5/8, 3/4	11.00
15	12	270	L	11.00	25.38	22.38	13.94	3.19	13.46	9/16, 5/8, 3/4	11.00



Uniropo Ltd
 3070 Universal Drive, Mississauga, ON, L4X 2C8
 TEL: 905-624-5131 800-457-9997
 FAX: 905-624-9265
 e-mail: info@unirope.com

Visit our on line catalogue: www.uniropo.com